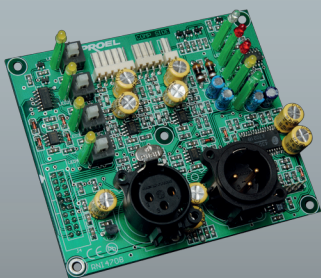




## EDGE ACTIVE SELF-POWERED SPEAKER SYSTEMS



In their market segment, the **Edge** Series active models represent the highest expression of Proel Sound Reinforcement. Audio quality and surprising sound pressure levels are their distinctive elements. Great care has been taken to provide every model with functions that enhance performance when used singularly for distributed or multi-source applications, but also when used in arrays or as stage monitors. The first four active models in the Edge Series are two mid-sized loudspeaker systems (C12A and C15A) and two stage monitors (12CXA and 15CXA). Their suspension systems feature flying points for installation and quick release for temporary use.



### Amplification electronics

All models feature internal amplification and processing, plus protection and excursion control circuitry. The circuits have been designed using high quality analog components, thus avoiding the typical drawbacks of digital electronics. The onboard amplifier is based on Pulse Width Modulation technology (Class D) and can deliver up to 2000 W of continuous power.

The protection system includes a **SPEAKER THERMAL PROTECTION** board that simulates the woofer's thermal behaviour: when an excessive temperature is recorded, the level is adjusted to ensure maximum reliability. As it memorizes data acquired, the protection system will work even if the speaker gets turned off and then switched back on. Signal processing operations allow quick adaptation of system performance to the actual conditions of use, immediately shown by the function LEDs.

- HF LIFT:** allows the high frequency response to be increased when necessary.
- COUPLED UNITS EQ:** reduces the increment of mid-low frequencies due to the simultaneous use of two or more systems side by side.
- LOW CUT:** filters bass frequencies whenever the systems are employed as satellites.



## EDGE C12A / C15A

- Rotatable horns, available with 60° x 40° or 90° x 60° dispersion
- Moving coils with high power handling
- Woofer with extended bass frequency performance
- On-board high-performance amplifier

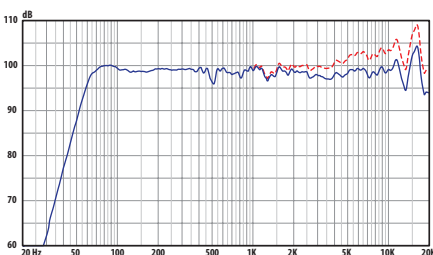
These systems can be used as full-range in a variety of applications. They feature woofers with neodymium magnets, carbon fiber-reinforced cones, 4" ISV coils wound internally and externally on the former, double demodulating rings, double silicon spiders and a water repellent protective treatment. High frequencies are reproduced by a large-format driver, featuring a moving coil with high power handling coupled to a rotatable horn with a 1.5" throat. The high frequency driver is combined with a thick aluminum progressive

waveguide with constant directivity: excellent directivity control, regular frequency response and low distortion are the features that enable these devices to reach high-end performance with excellent sound quality. The systems can be equipped with a 60° x 40° waveguide (C12A64 and C15A64) or, on demand, with a 90° x 60° waveguide (C12A96 and C15A96).

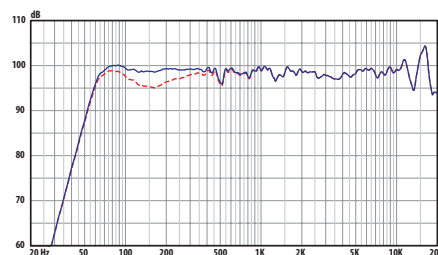
### EDGE C12A



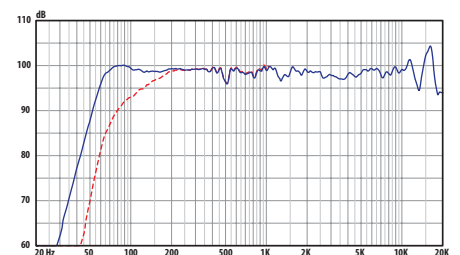
### EDGE C15A



HF LIFT



COUPLED UNIT EQ



LOW CUT



## EDGE 12CXA / 15CXA

- Coaxial woofer with 60° x 40° elliptical exponential horn
- Low profile design, ideal for theatre and television applications
- On-board high-performance amplifier

**EDGE** series monitors are high-efficiency, low-profile 2-way enclosures. Their active versions use brand new custom-designed coaxial loudspeakers featuring an exponential horn and a powerful driver with a 3" coil and a titanium membrane. A high-performance woofer ensures a broad frequency bandwidth. A single powerful neodymium magnet structure guarantees high sensitivity (98 dB/107 dB) with drastic weight reduction.

The elliptical exponential horn grants an angular coverage of 60° x 40° with increased flexibility for monitoring, FoH and fixed installations. The high-performance coaxial transducer employed provides a good sound balance and great intelligibility even at extremely high power. Last, but not least, their compact design makes for an attractive, yet low, profile, which is a very important feature, especially in television applications

### EDGE 12CXA



### EDGE 15CXA



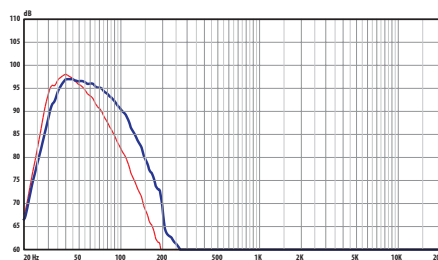
### EDGE SW121A

- On-board high-performance amplifier
- Direct-radiating bass unit
- 21" woofer with a 5.3" ISV coil
- Over-damped enclosure

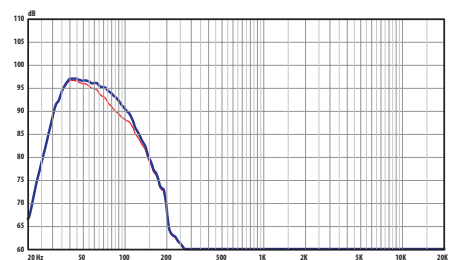
The **SW121A** direct-radiating 21" subwoofer completes bass response with an impressive excursion control and amazing power handling. Its sturdy double silicon spider (DDS) mechanical cone suspension system, the double demodulating rings (DDR) and the over-damped enclosure provide a great deal of defined and well controlled energy at low frequencies. A passive version is also available (EDGE SW121P).

Dedicated controls

- **INFRA LPF:** lowers the crossover frequency when used as INFRASUB
- **MULTIPLE UNITS EQ:** reduces the increase in level of the upper low frequency range (80 Hz) due to the simultaneous use of two or more systems
- **EXTENDED LOW:** extends response at low frequencies



EXTENDED LOW INFRA LPF

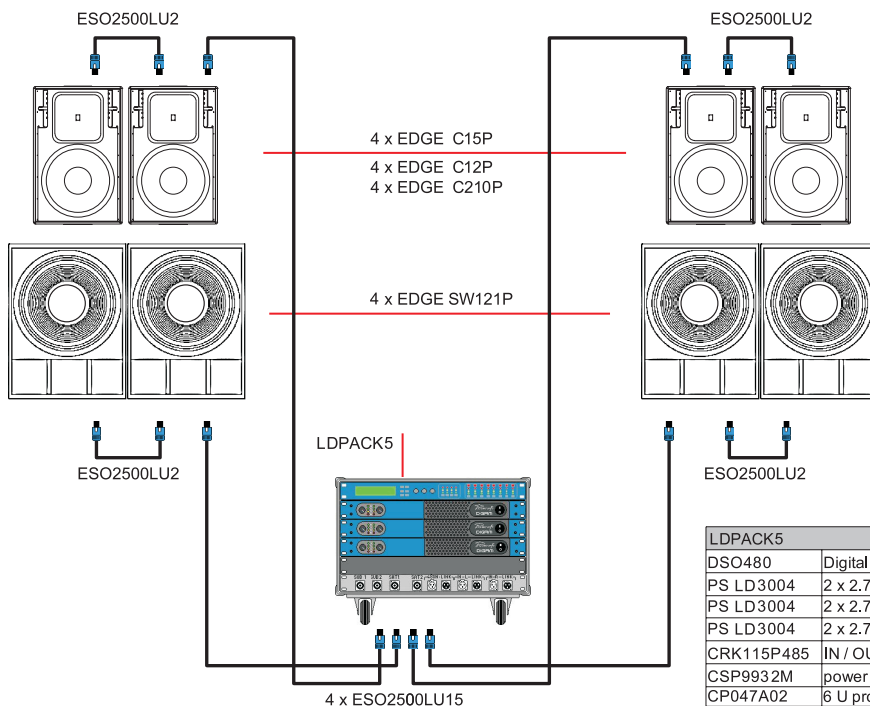


MULTIPLE UNITS EQ



# DATA SHEET

	C12A	C15A	12CXA	15CXA	SW121A
System type	2-way processed active enclosure	2-way processed active enclosure	2-way processed coaxial active enclosure	2-way processed coaxial active enclosure	processed active subwoofer
Frequency response	60 Hz - 18 kHz (-3 dB, +6 dB)	50 Hz - 18 kHz (-3 dB, +6 dB)	75 Hz - 18 kHz (-3 dB, +6 dB)	60 Hz - 18 kHz (-3 dB, +6 dB)	32 Hz - 80 Hz (-3 dB, +6 dB)
Max SPL	130 dB @ 1 m	132 dB @ 1 m	131 dB @ 1 m	131 dB @ 1 m	131 dB @ 1 m
Low Frequency Device	12" neodymium woofer - 4" voice coil	15" neodymium woofer - 4" voice coil	12" neodymium woofer - 3" voice coil	15" neodymium woofer - 3" voice coil	21" neodymium woofer - 5,3" voice coil
High Frequency Device	1.5" neodymium driver - 3" voice coil	1.5" neodymium driver - 3" voice coil	1.4" neodymium driver - 3" voice coil	1.4" neodymium driver - 3" voice coil	-
Angular coverage	60° x 40° (C12A64) 90° x 60° (C12A96) rotatable	60° x 40° (C12A64) 90° x 60° (C12A96) rotatable	60° x 40° elliptical horn	60° x 40° elliptical horn	-
Directivity index (DI)	4.9 or 6 average, 630 Hz to 18 kHz	4.7 or 5.9 average, 630 Hz to 18 kHz	5 average, 630 Hz to 18 kHz	5 average, 630 Hz to 18 kHz	-
Amplifier continuous power	1000 W + 500 W (limited) bi-amp	1000 W + 500 W (limited) bi-amp	1000 W + 500 W (limited) bi-amp	1000 W + 500 W (limited) bi-amp	1500 W
Connectors	IN - LINK: XLR M - XLR F MAIN LINK: PowerCon® (NAC3MPB) MAIN: PowerCon® (NAC3MPA)	IN - LINK: XLR M - XLR F MAIN LINK: PowerCon® (NAC3MPB) MAIN: PowerCon® (NAC3MPA)	IN - LINK: XLR M - XLR F MAIN LINK: PowerCon® (NAC3MPB) MAIN: PowerCon® (NAC3MPA)	IN - LINK: XLR M - XLR F MAIN LINK: PowerCon® (NAC3MPB) MAIN: PowerCon® (NAC3MPA)	IN - LINK: XLR M - XLR F MAIN LINK: PowerCon® (NAC3MPB) MAIN: PowerCon® (NAC3MPA)
Input impedance	LINE: 20 kohm balanced, 10 kohm unbalanced	LINE: 20 kohm balanced, 10 kohm unbalanced	LINE: 20 kohm balanced, 10 kohm unbalanced	LINE: 20 kohm balanced, 10 kohm unbalanced	LINE: 20 kohm balanced, 10 kohm unbalanced
Input sensitivity	+4dBu for Full Power	+4dBu for Full Power	+4dBu for Full Power	+4dBu for Full Power	+4dBu for Full Power
Controls	HF LIFT - COUPLED UNITS EQ LOW CUT - GND LINK	HF LIFT - COUPLED UNITS EQ LOW CUT - GND LINK	HF LIFT - COUPLED UNITS EQ LOW CUT - GND LINK	HF LIFT - COUPLED UNITS EQ LOW CUT - GND LINK	INFRA LPF - MULTIPLE UNITS EQ EXTENDED LOW - GND LINK
Cooling	Heat sink and variable speed DC fan	Heat sink and variable speed DC fan	Heat sink and variable speed DC fan	Heat sink and variable speed DC fan	Heat sink and variable speed DC fan
Protections	DC - Thermal - Soft Start - Short Circuit - Overload - Input Limiter - Speaker Thermal Protection - Infrasonic Filter	DC - Thermal - Soft Start - Short Circuit - Overload - Input Limiter - Speaker Thermal Protection - Infrasonic Filter	DC - Thermal - Soft Start - Short Circuit - Overload - Input Limiter - Speaker Thermal Protection - Infrasonic Filter	DC - Thermal - Soft Start - Short Circuit - Overload - Input Limiter - Speaker Thermal Protection - Infrasonic Filter	DC - Thermal - Soft Start - Short Circuit - Overload - Input Limiter - Speaker Thermal Protection - Infrasonic Filter
Trapezoidal taper	20°	20°	-	-	-
Monitor taper	-	-	42°	42°	-
Flying System	Fly Track	Fly Track	4 x M10 lateral	4 x M10 lateral	-
Construction	trapezoidal, 15 mm birch plywood, internally reinforced	trapezoidal, 15 mm birch plywood, internally reinforced	trapezoidal, 15 mm birch plywood, internally reinforced	trapezoidal, 15 mm birch plywood, internally reinforced	18 \ 15 mm birch plywood, internally reinforced
Power supply	115V or 230 V, 50/60 Hz	115V or 230 V, 50/60 Hz	115V or 230 V, 50/60 Hz	115V or 230 V, 50/60 Hz	115V or 230 V, 50/60 Hz Rated 1/8 power output
Average consumption	510 VA (1/8 max output power)	510 VA (1/8 max output power)	510 VA (1/8 max output power)	510 VA (1/8 max output power)	510 VA (1/8 max output power)
Dimensions (W x H x D)	41 x 63 x 37.8 cm	47 x 73 x 46 cm	43.5 x 39.4 x 61.6 cm	58.4 x 39.4 x 61.6 cm	58.4 x 76.5 x 81.0 cm
Peso	32.5 kg	39.5 kg	24 kg	29.5 kg	62,5 kg



## EDGE COMPACT SET-UP EXAMPLE

LDPACK5	
DSO480	Digital Signal Processor 4 IN / 8 OUT
PS LD3004	2 x 2.700 Watt 2 ohm power amplifier
PS LD3004	2 x 2.700 Watt 2 ohm power amplifier
PS LD3004	2 x 2.700 Watt 2 ohm power amplifier
CRK115P485	IN / OUT panel
CSP9932M	power panel 32 A mono plug
CP047A02	6 U professional rack case



## OPTIONAL ACCESSORIES

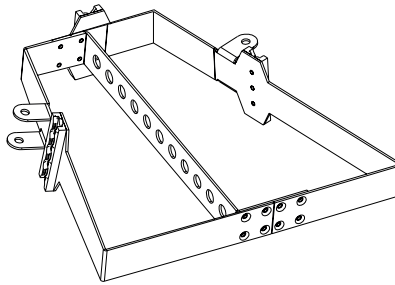
For transportation, professional padded cases for EDGE15CXPB and EDGE12CXP are available. Every case hosts two monitors.



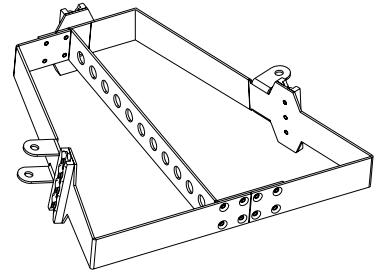
CP074C05

CP058C03	CASE FOR 4 X EDGE25
CP025E04	CASE FOR 4 X EDGE8CX
CP058A04	CASE FOR 2 X EDGE12CX
CP074C05	CASE FOR 2 X EDGE15CX
CP034A08	CASE FOR 4 X EDGE C65P
CP017A08	CASE FOR 2 X EDGE C12
CP017B08	CASE FOR 2 X EDGE C15
CP017C08	CASE FOR 2 X EDGE C210
CP017E08	CASE FOR 2 X EDGE112SP

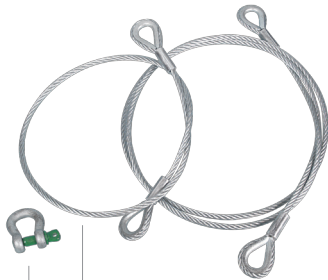
EDGE compact suspension accessories are available either for fixed installations or for mobile situations. Their integrated fly-track system permits them to be suspended in arrays using the dedicated flying bars.



95KPTEDGE1210  
FOR EDGE C12 / C210



95KPTEDGE15  
FOR EDGE C15



AC171

AC172

AC 173



AC172S



AC178

