

PRONET

Loudspeaker Control Software

Loading Presets Into
PC260
Digital Loudspeaker Processor





Here below you can find the procedure for **loading PRESET files with PRONET software** into the memory of PC260 Digital Loudspeaker Processor. PC260 preset files have the **.pcf extension** and they are provided by PROEL and AXIOM for the use in specific products or they can be programmed and saved by any user using PRONET software

Preset types

The internal memory of PC260 is organized in two zones: the first zone, called **Factory Memory** (lower memory locations) and a second zone, called **User Memory** (higher memory locations). You can't overwrite a preset, store a modified preset or store a new preset in the Factory Memory locations! You can store a preset only in a User Memory location.

Presets in Factory Memory can be modified in all parameters or only in a sub-set of parameters, but they can't be overwritten, they can be only saved in another User Memory location. In order to distinguish the different kinds of presets, they are labeled with a marking letter before the name.

Default Preset (D): this is the flat factory preset, without filters, dynamics or other processing blocks activated, this is a factory preset used to start a completely new configuration or setup. It has to be used also to delete some older preset stored in the user memory (overwriting the older one that has to be deleted);

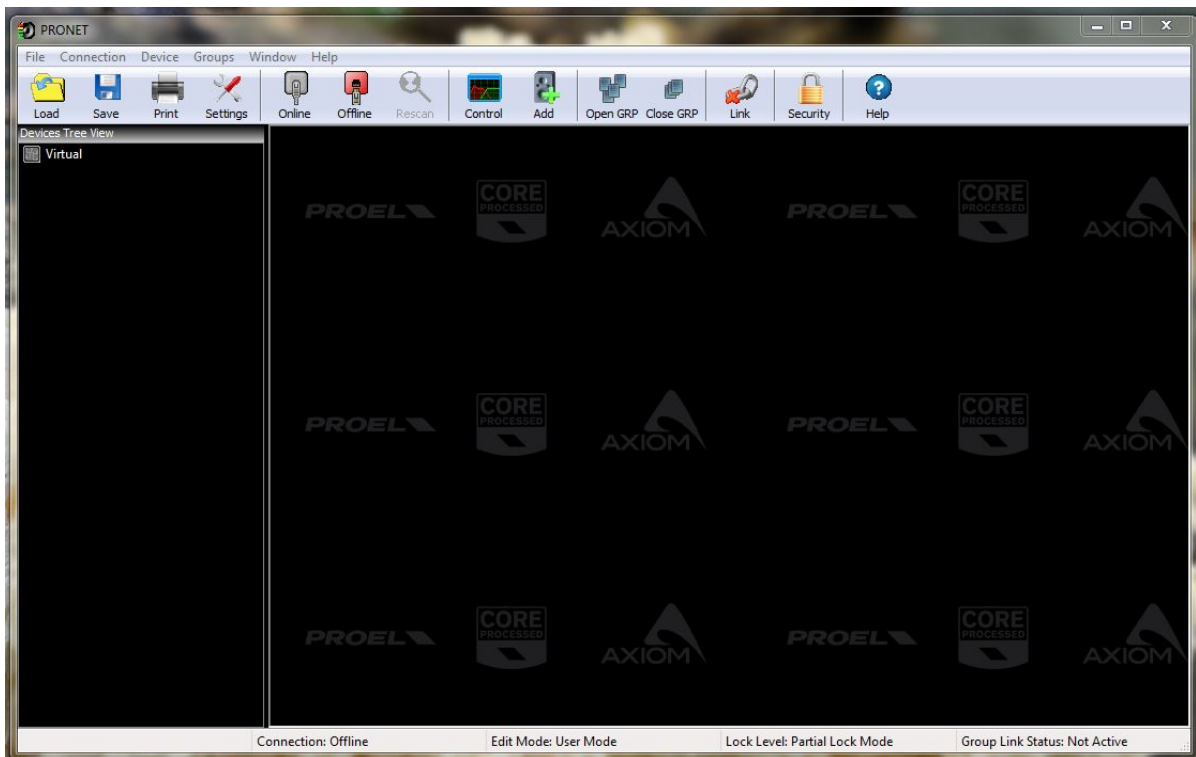
Factory Protected Preset (F): this is a factory preset, pre-loaded into the PC260 Factory Memory and programmed for processing Proel's audio systems. This kind of preset is "protected", meaning that **you can modify only the parameters of the input channel**. The parameters of the **output channels are masked** because they are used by Proel to setup the systems that preset has been designed for;

Protected Preset (P): this is a user protected preset, **generated starting from a factory protected preset**, modified in some input parameters and then stored in a user memory location. The preset can just be modified again in its input channel parameters (and hence stored again) but the output parameters are always masked;

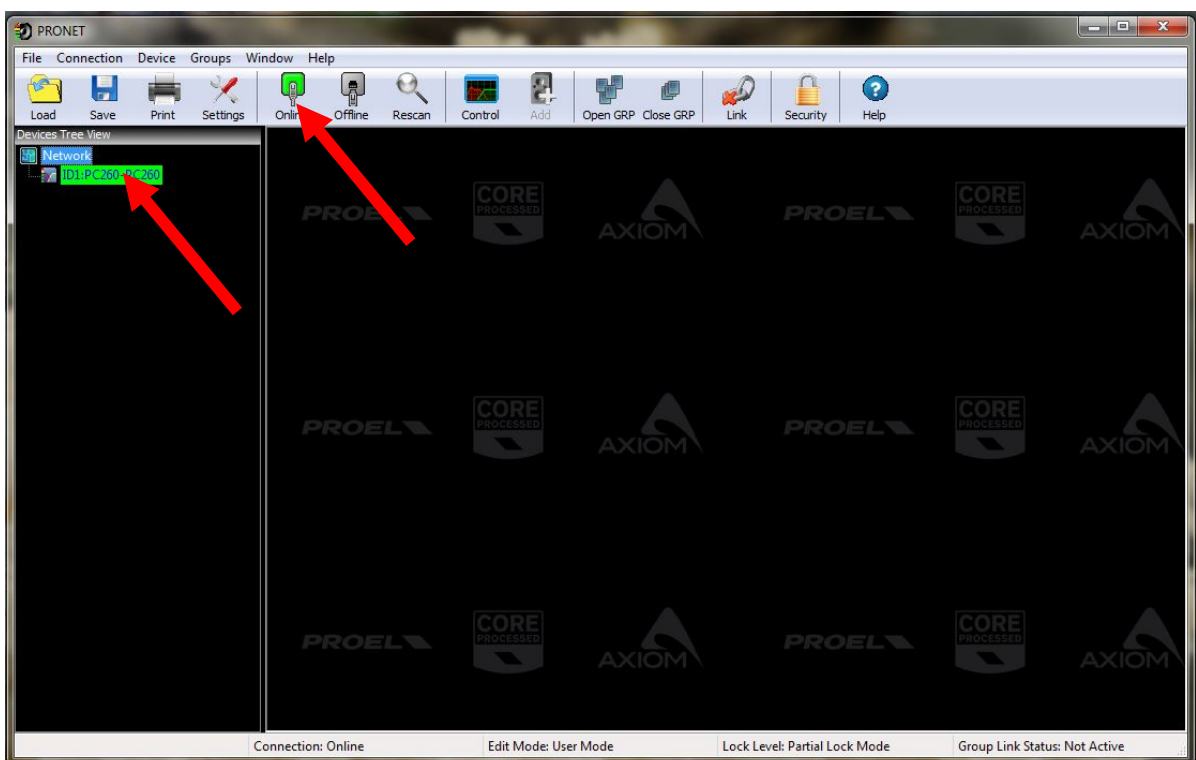
User Preset (U): this is a user preset (in a user memory location) not masked. It is fully editable and it can be stored or overwritten.

How to load a PRESET into the PC260

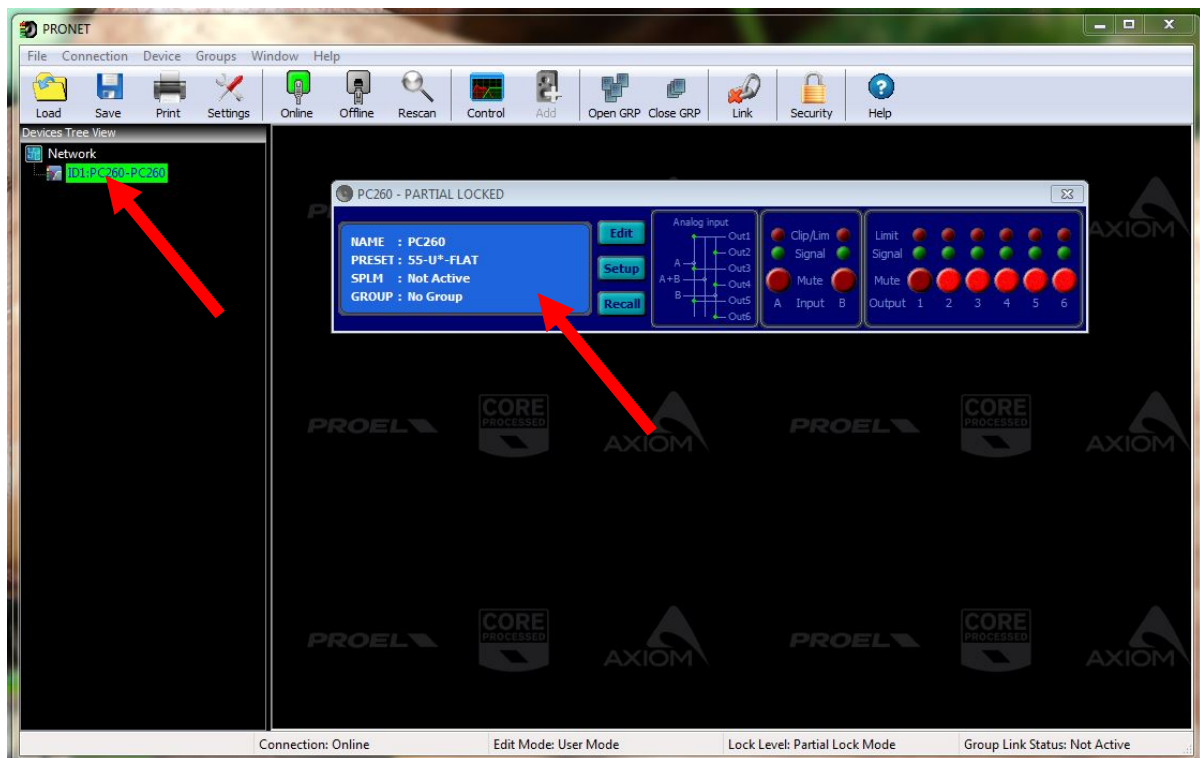
- 1) Connect the PC260 to the computer thru the USB port (or using the USB2CAN converter connected to the PRONET NETWORK connector) and switch it on.
- 2) Open PRONET software.



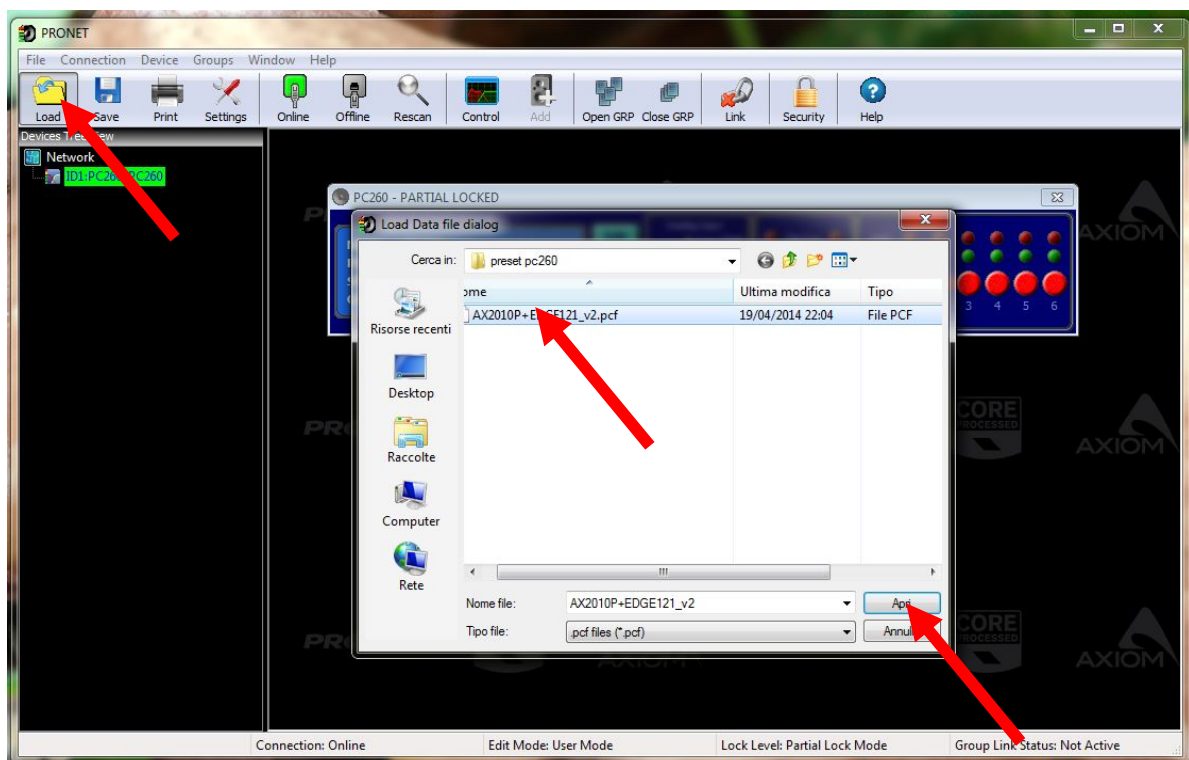
- 3) Press ONLINE button: the software will scan the network and show the connected device in the DEVICE TREE WINDOW on the left side of the screen.



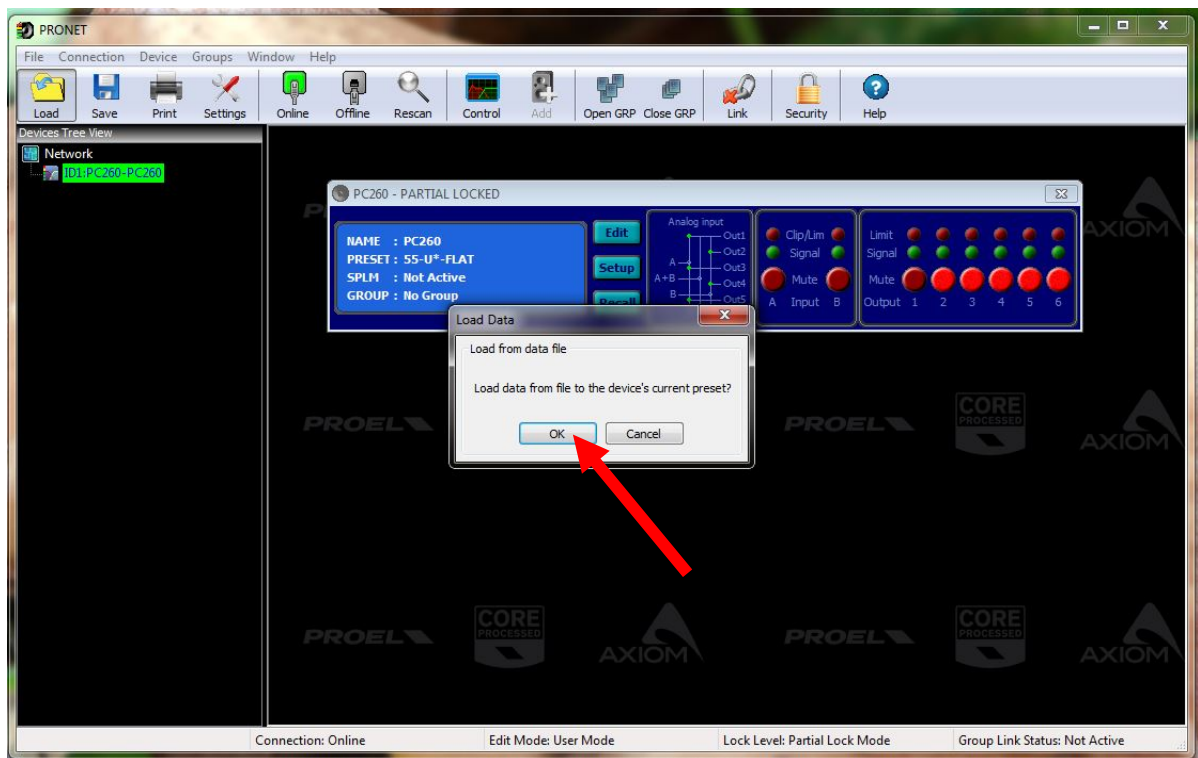
- 4) Double-click on the PC260 device to open the device's CONTROL PANEL.



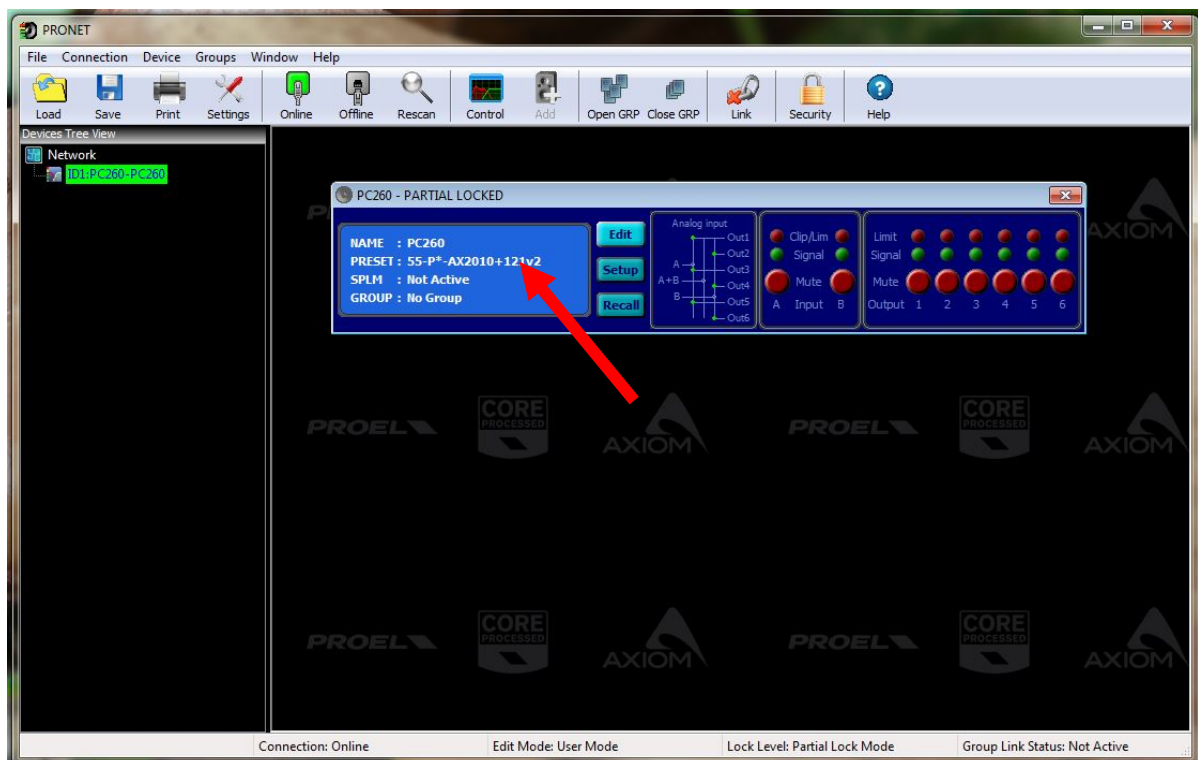
- 5) Press the LOAD button, select the preset file you want to load and press OPEN.



6) Press OK in the LOAD DATA window.



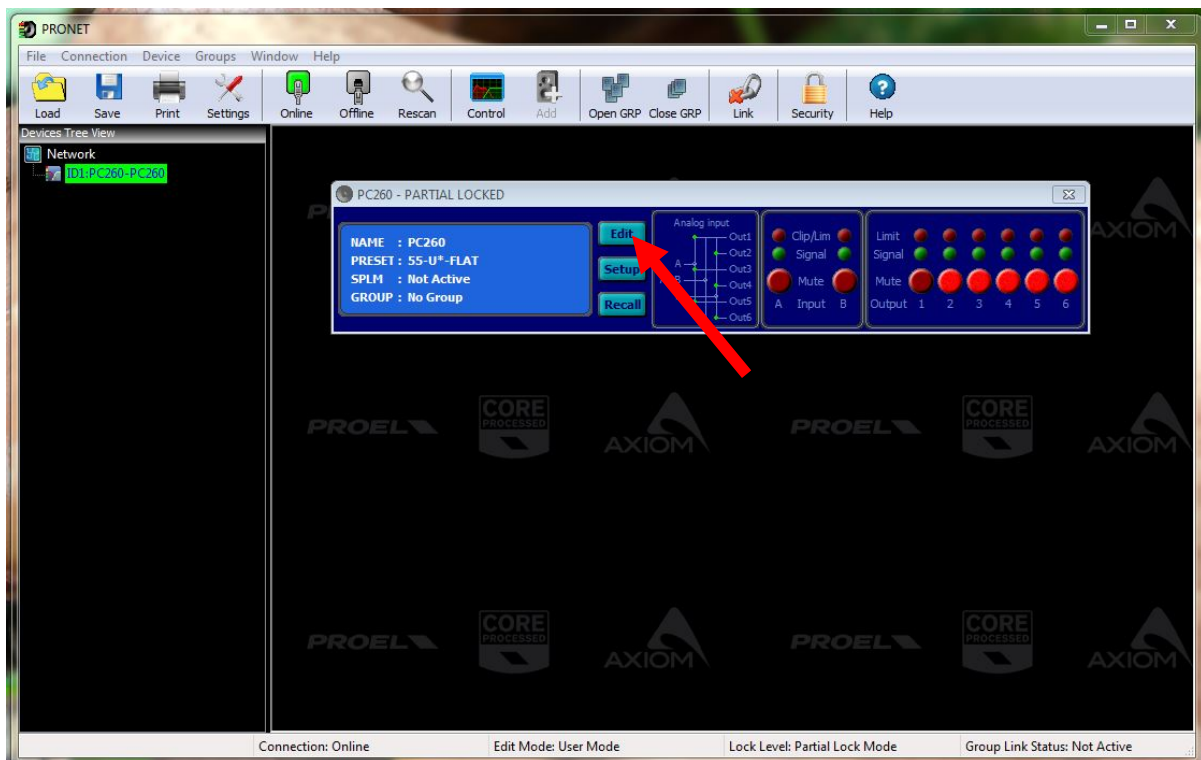
7) Now the PRESET is LOADED in the PC260



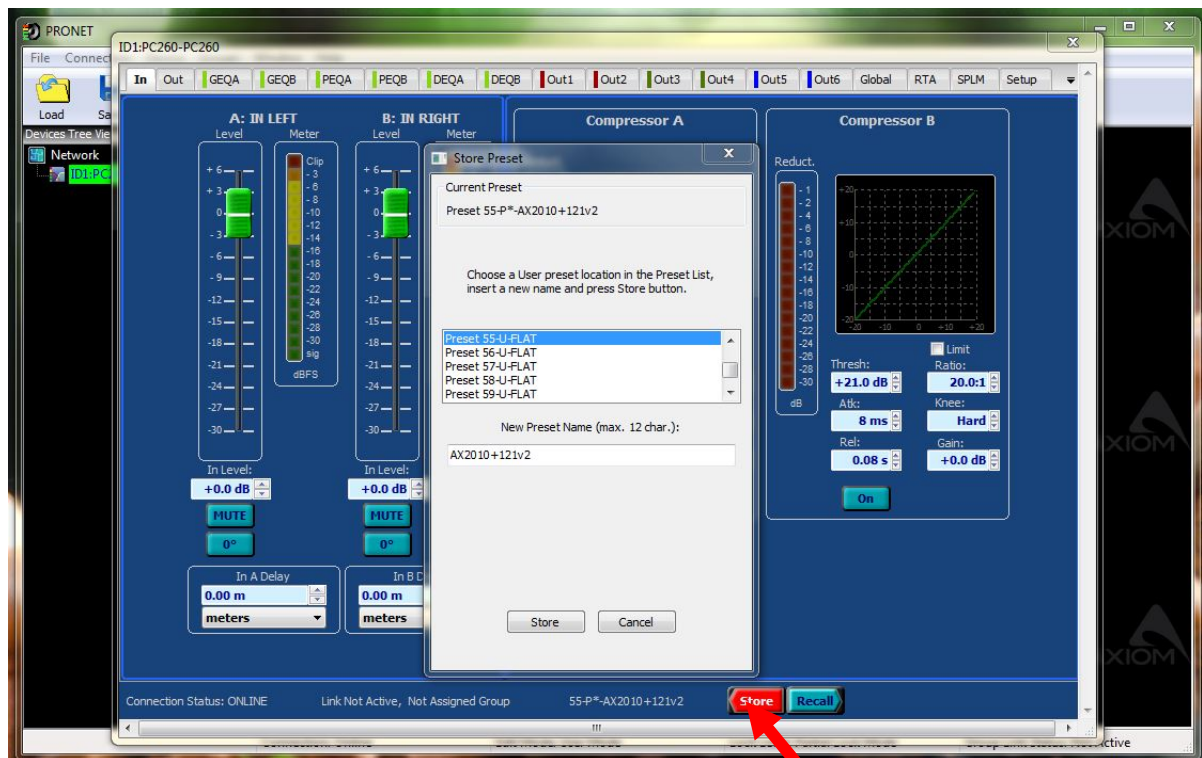
NOTE: the preset is now loaded into the current memory of the processor, but it is not saved into any user memory. In order to keep the presets you need to save it into one USER MEMORY.

How to save a PRESET into the PC260

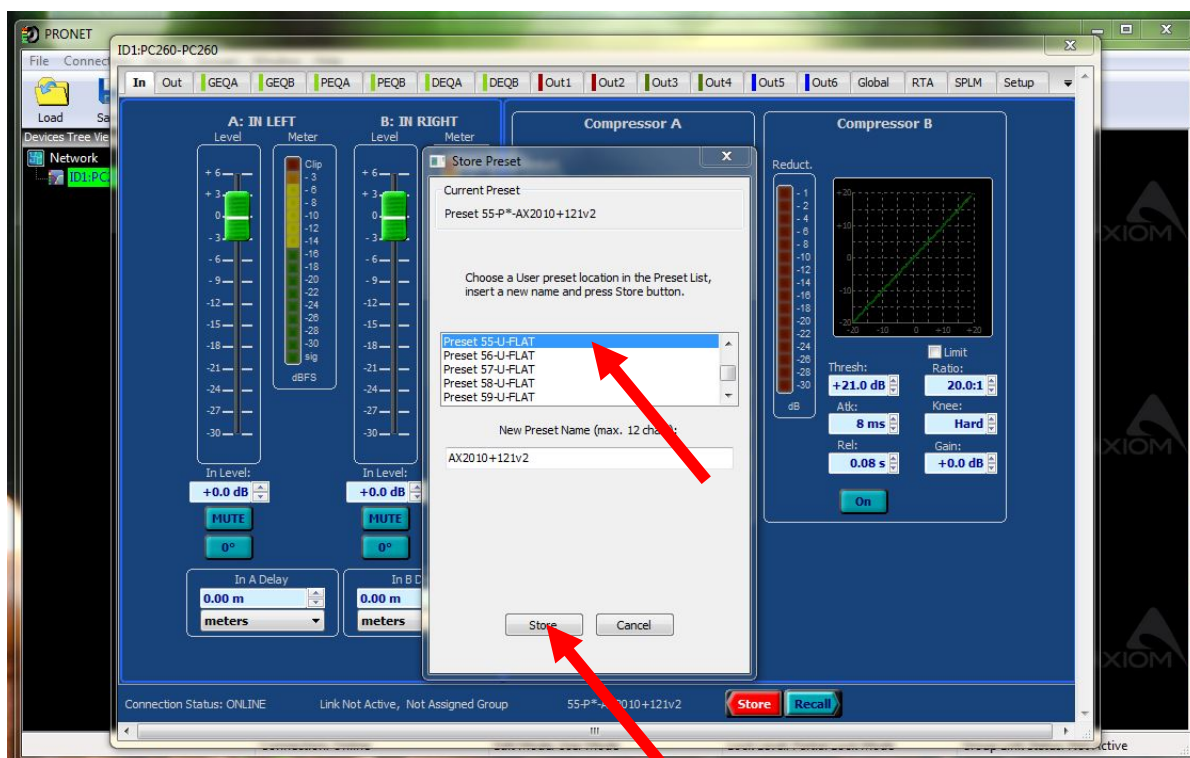
- 1) Press the EDIT button.



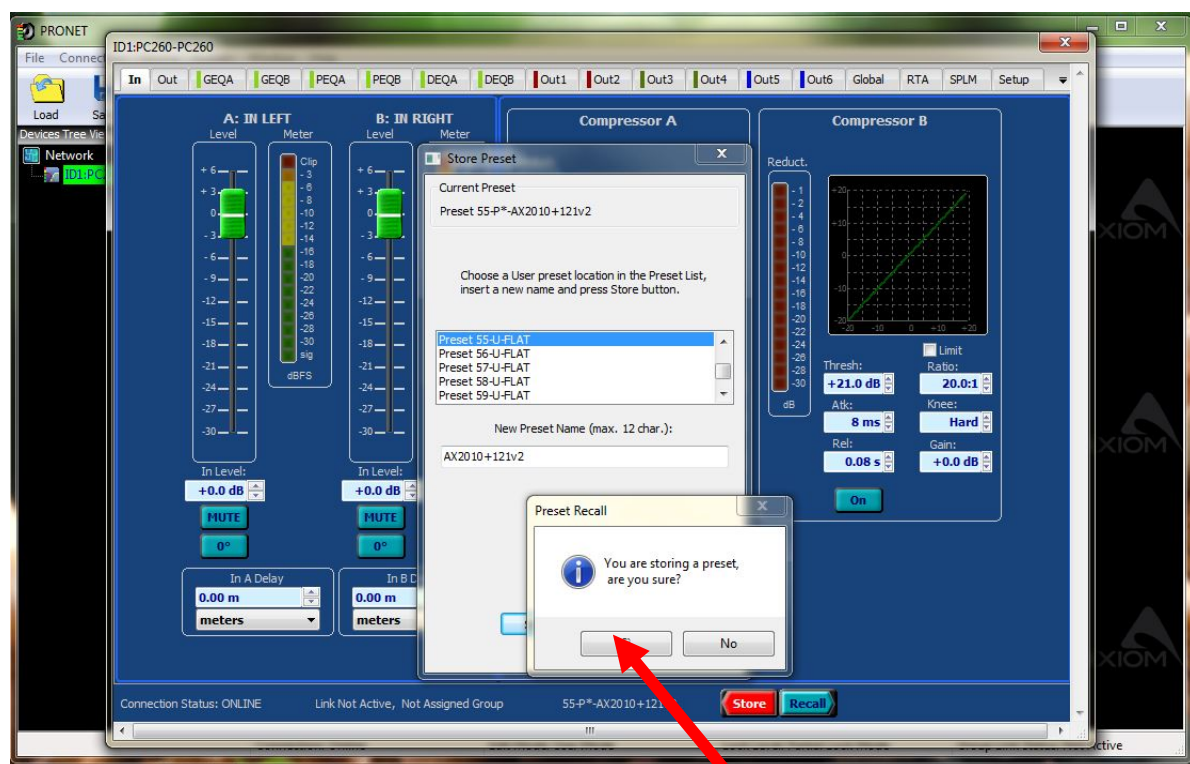
- 2) Press the STORE button



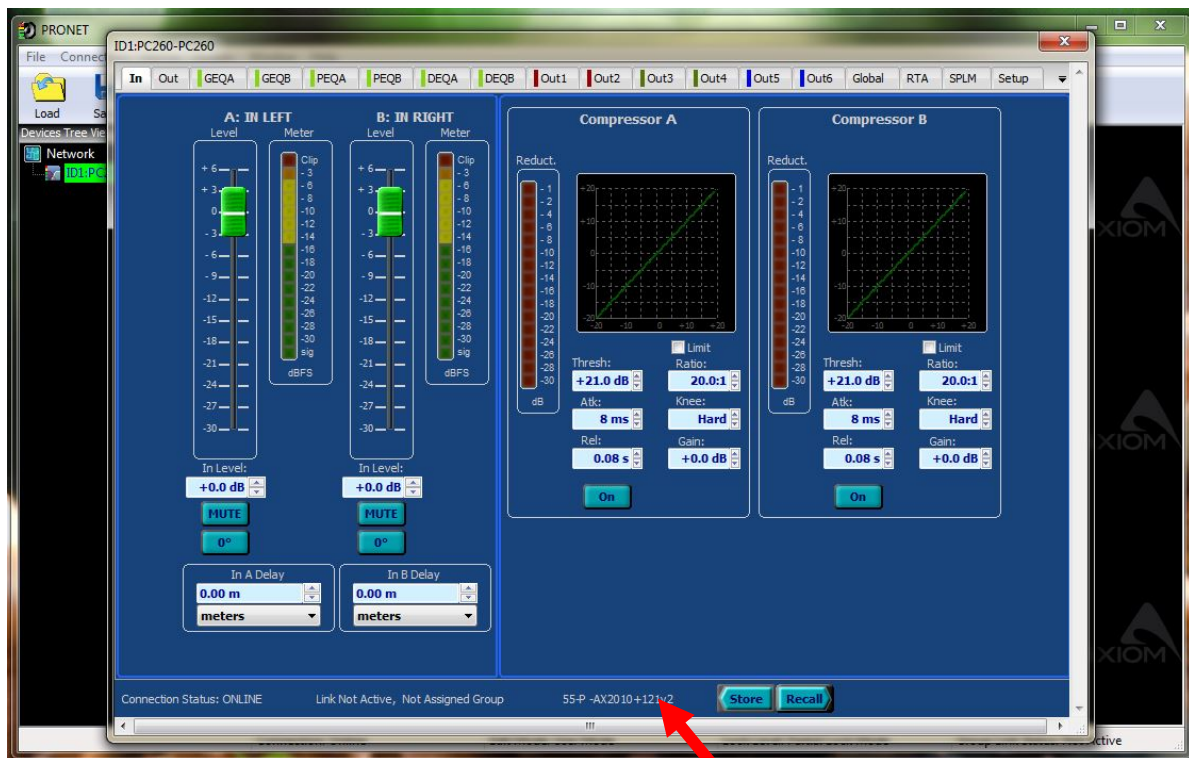
- 3) Select any available USER MEMORY location in the next window and press again STORE.



- 4) Press YES to CONFIRM



5) Now the loaded PRESET is saved in the processor.



NOTE: if the saved preset has been derived from a USER PRESET, then all its parameters can be edited. If the saved preset has been derived from a FACTORY PRESET or if it has been provided by PROEL for processing a specific system, then it is a PROTECTED preset and only the INPUT PARAMETERS can be edited.



PROEL S.p.A.

(World Headquarters - Factory)

Via alla Ruenia 37/43

64027 Sant'Omero (Te) – Italy

Tel: +39 0861 81241

Fax: +39 0861 887862

www.proel.com